

TECHNICAL MANUAL

ORGANIZATIONAL, DIRECT SUPPORT, AND GENERAL SUPPORT MAINTENANCE  
REPAIR PARTS AND SPECIAL TOOLS LISTS  
(INCLUDING DEPOT MAINTENANCE REPAIR PARTS AND SPECIAL TOOLS)

FOR

PROJECTOR, OVERHEAD STILL PICTURE PH-637D/PFP  
(NSN 6730-00-493-2964)

---

HEADQUARTERS, DEPARTMENT OF THE ARMY

NOVEMBER 1978



TECHNICAL MANUAL }  
No. 11-6730-235-24P }

HEADQUARTERS  
DEPARTMENT OF THE ARMY  
WASHINGTON, DC, 8 November 1978

ORGANIZATIONAL, DIRECT SUPPORT, AND GENERAL SUPPORT MAINTENANCE  
REPAIR PARTS AND SPECIAL TOOLS LISTS  
(INCLUDING DEPOT MAINTENANCE REPAIR PARTS AND SPECIAL TOOLS)  
FOR  
PROJECTOR, OVERHEAD STILL PICTURE PH-637D/PFP  
(NSN 6730-00-493-2984)  
*Current as of 12 June 1978*

**REPORTING OF ERRORS**

You can improve this manual by recommending improvements using DA Form 2028-2 located in the back of the manual. Simply tear out the self addressed form, fill it out as shown on the sample, fold it as shown, and drop it in the mail.

If there are no blank DA Form 2028-2 in the back of your manual, use the standard DA Form 2028 (Recommended Changes to Publications and Blank Forms) and forward to the Commander, US Army Communications and Electronics Materiel Readiness Command, ATTN: DRSEL-ME-MB, Fort Monmouth, New Jersey 07703.

In either case a reply will be furnished direct to you.

Table of Contents

	Page	Illus Figure
SECTION I. Introduction . . . . .	1	
II. Repair parts list . . . . .	5	
Group 00 Projector, Overhead, Still Picture PH-637D/PFP . . . . .	5	
SECTION III. Special tools list (Not applicable)		
IV. National stock number and part number index . . . . .	14	

\*This manual supersedes so much of TM 11-6730-235-12,4 March 1970 and TM 11-6730-235-35,20 May 1971, as pertains to repair parts and special tools list.



# SECTION I INTRODUCTION

---

## 1. Scope

This manual lists spares and repair parts; special tools; special test, measurement, and diagnostic equipment (TMDE), and other special support equipment required for performance of organizational, direct support, and general support maintenance of the PH-637D PFP. It authorizes the requisitioning and issue of spares and repair parts as indicated by the source and maintenance codes.

## 2. General

This Repair Parts and Special Tools Lists is divided into the following sections:

*a. Section II. Repair. Parts List.* A list of spares and repair parts authorized for use in the performance of maintenance. The list also includes parts which must be removed for replacement of the authorized parts. Parts lists are composed of functional groups in numeric sequence, with the parts in each group listed in figure and item number sequence.

*b. Section III. Special Tools List.* Not applicable.

*c. Section IV. National Stock Number and Parts Number Index.* A list, in National item identification number (NIIN) sequence, of all National stock numbers (NSN) appearing in the listings, followed by a list, in alphameric sequence, of all part numbers appearing in the listings. National stock numbers and part numbers are cross-referenced to each illustration figure and item number appearance.

## 3. Explanation of Columns

*a. Illustration.* This column is divided as follows:

(1) *Figure number.* Indicates the figure number of the illustration on which the item is shown.

(2) *Item number.* The number used to identify item called out in the illustration.

*b. Source, Maintenance, and Recoverability (SMR) Codes.*

(1) *Source code.* Source codes indicate the manner of acquiring support items for maintenance, repair, or overhaul of end items. Source codes are entered in the first and second positions of the Uniform SMR Code format as follows:

Code	Definition
P A	Item procured and stocked for anticipated or known usage.
X D	A support item that is not stocked. When required, item will be procured through normal supply channels.

## NOTE

Cannibalization or salvage may be used as a source of supply for any items source coded above except those coded XX and aircraft support items as restricted by AR 700-42.

(2) *Maintenance code.* Maintenance codes are assigned to indicate the levels of maintenance authorized to USE and REPAIR support items. The maintenance codes are entered in the third and fourth positions of the Uniform SMR Code format as follows:

(a) The maintenance code entered in the third position will indicate the lowest maintenance level authorized to remove, replace, and use the support item. The maintenance code entered in the fourth position will indicate one of the following levels of maintenance:

Code	Application/Explanation
O	Support item is removed, replaced, used at the organizational level.
F	Support item is removed, replaced, used at the direct support level.
H	Support item is removed, replaced, used at the general support level.

(b) The maintenance code entered in the fourth position indicates whether the item is to be repaired and identifies the lowest maintenance level with the capability to perform complete repair (i.e., all authorized maintenance functions). This position will contain one of the following maintenance codes:

Code	Application/Explanation
H	The lowest maintenance level capable of complete repair of the support item is the
Z	Nonreparable. No repair is authorized.

(3) *Recoverability code.* Recoverability codes are assigned to support items to indicate the disposition action on unserviceable items. The recoverability code is entered in the fifth position of the Uniform SMR Code format as follows:

Recoverability Codes	Definition
Z	Nonreparable item. When unserviceable, condemn and dispose at the level indicated in position 3.
H	Reparable item. When uneconomically reparable, condemn and dispose at the general support level.

c. *National Stock Number.* Indicates the National stock number assigned to the item and will be used for requisitioning purposes.

d. *Part Number.* Indicates the primary number used by the manufacturer (individual, company, firm, corporation, or Government activity), which controls the design and characteristics of the item by means of its engineering drawings, specifications, standards, and inspection requirements to identify an item or range of items.

NOTE

When a stock numbered item is requisitioned, the repair part received may have a different part number than the part being replaced.

e. *Federal Supply Code for Manufacturer (FSCM).* The FSCM is a 5-digit numeric code listed in SB 708-42 which is used to identify the manufacturer, distributor, or Government agency, etc.

f. *Description.* Indicates the Federal item name and, if required, a minimum description to identify the item.

g. *Unit of Measure (U/M).* Indicates the standard of the basic quantity of the listed item as used in performing the actual maintenance function. This measure is expressed by a two-character alphabetical abbreviation (e.g., ea, in, pr, etc). When the unit of measure differs from the unit of issue, the lowest unit of issue that will satisfy the required units of measure will be requisitioned.

h. *Quantity Incorporated in Unit.* Indicates the quantity of the item used in the breakout shown on the illustration figure, which is prepared for a functional group, subfunctional group, or an assembly.

#### 4. Special Information

The following publications pertain to the PH-637D/PFP and its components:

TM 11-6730-235-12 Projector, Still Picture PH-637D/PFP

TM 11-6730-235-35, Projector, Stilt Picture PH-637/PFP

#### 5. How to Locate Repair Parts

a. When National stock number or part number is unknown.

(1) *First.* Using the table of contents, determine the functional group within which the item belongs. This is necessary since illustrations are prepared for functional groups and listings are divided into the same groups.

(2) *Second.* Find the illustration covering the functional group to which the item belongs.

(3) *Third.* Identify the item on the illustration and note the illustration figure and item number of the item.

(4) *Fourth.* Using the Repair Parts Listing, find the figure and item number noted on the illustration.

b. When National stock number or part number is known.

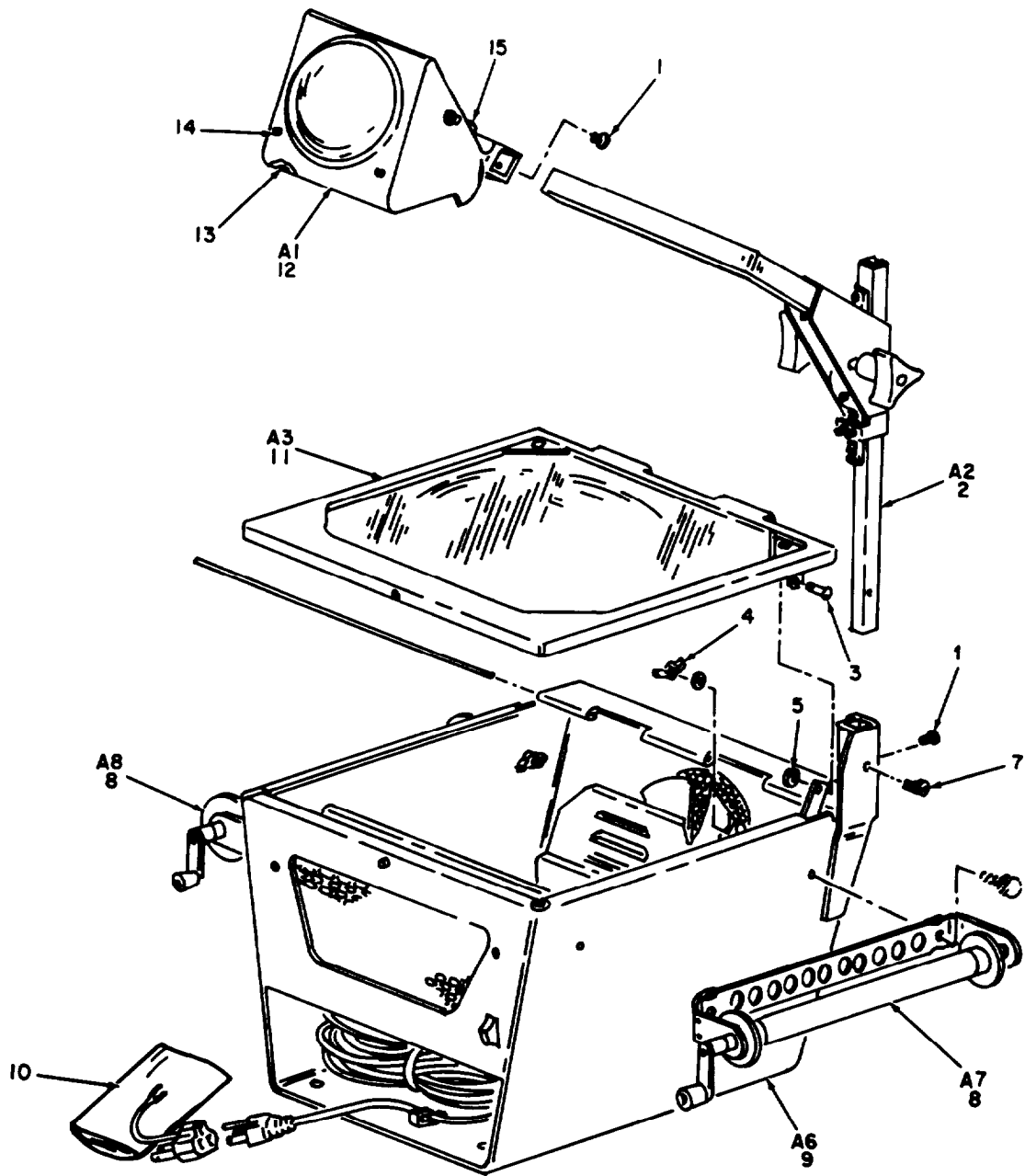
(1) *First.* Using the Index of National Stock Numbers and Part Numbers, find the pertinent National stock number or part number. This index is in NIIN sequence followed by a list of part numbers in alphameric sequence, cross-referenced to the illustration figure number and item number.

(2) *Second.* After finding the figure and item number, locate the figure and item number in the repair parts list.

#### 6. Abbreviations

Not applicable.





EL5BC001

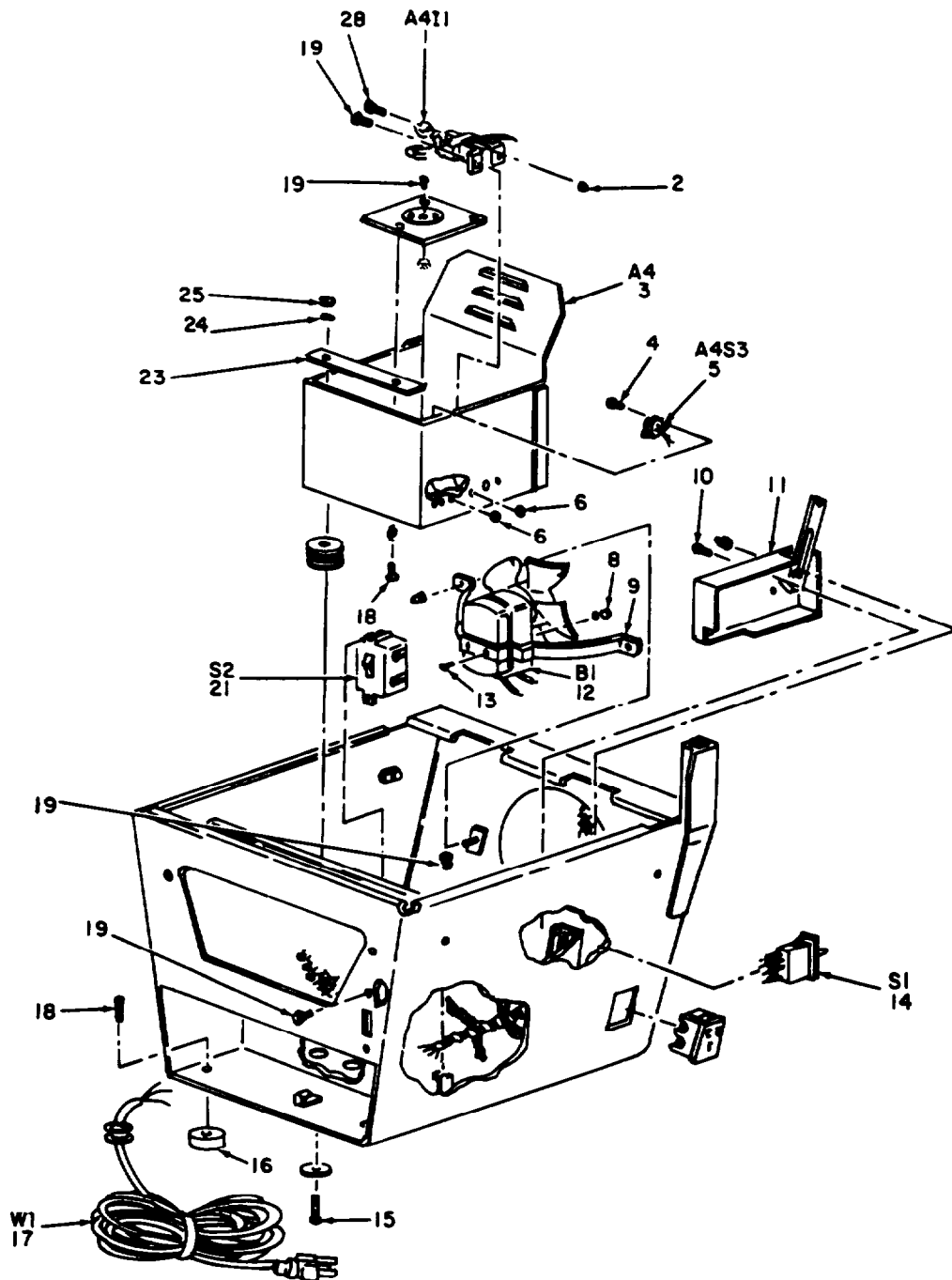
Figure 1. Projector, Overhead, Still Picture PH-637D/PFP, Exploded View.



## SECTION II

TM11-6730-235-24P

(1)		(2)	(3)	(4)	(5)	(6)	(7)	(8)
ILLUSTRATION		SMR CODE	NATIONAL STOCK NUMBER	PART NUMBER	FSCM	DESCRIPTION  <i>USABLE ON CODE</i>	U/M	QTY INC IN UNIT
(a) FIG. NO.	(b) ITEM NO.							
						GROUP 00 PROJECTOR, OVERHEAD, STIL PICTURE  PH-637D/PFP		
1	1	PAFZZ	5305-00-984-6191	MS35206-243	96906	SCREW, MACHINE, BND	EA	4
1	2	PAHHH	6730-00-165-7299	80-9	31535	ASSEMBLY, ARM AND	EA	1
1	3	PAHZZ	5320-00-242-1578	MS20470A6-8	96906	RIVET, ALUMINUM, RDH	EA	1
1	4	PAHZZ	5310-00-515-9267	MS35425-37	96906	NUT, WING 10-24	EA	2
1	5	PAHZZ	5310-00-995-2723	MS24679-22	96906	NUT, CAP, 8/32	EA	1
1	7	PAFZZ	5305-00-984-6189	MS35206-241	96906	SCREW, MACHINE, BND	EA	1
1	8	PAHHH	6730-00-427-7821	615-82	31535	ASSEMBLY, ATTACHMENT	EA	2
1	9	XDHHH		80-0	31535	ASSEMBLY, CASE	EA	1
1	10	XDOZZ		MORB5-15	31535	CASE, CARRYIN	EA	1
1	11	XDHHH		80-30	31535	ASSEMBLY, PLSTE, TOP	EA	1
1	12	PAHHH	6730-00-350-4177	80-8	31535	ASSEMBLY, HEAD, LENS	EA	1
1	13	PAFZZ	5305-00-984-4988	MS35206-228	96906	SCREW, MACHINE, BND	EA	2
1	14	PAHZZ	5305-00-984-4984	MS35206-227	96906	SCREW, MACHINE, BND	EA	2
1	15	PAHZZ	5305-00-984-4952	MS35206-225	96906	SCREW, MACHINE, BND	EA	2



EL5BC002

Figure 2. Projector, Overhead, Still Picture PH-637D/PFP, Case Assembly.

## SECTION II

TM11-6730-235-24P

(1)		(2)	(3)	(4)	(5)	(6)	(7)	(8)
ILLUSTRATION		SMR CODE	NATIONAL STOCK NUMBER	PART NUMBER	FSCM	DESCRIPTION  <i>USABLE ON CODE</i>	U/M	QTY INC IN UNIT
(a) FIG. NO.	(b) ITEM NO.							
2	1	PAOZZ	6240-00-419-4301	120DYS	06247	LAMP, PJT	EA	1
2	2	XDHZZ		MS203658832A	96906	NUT, HEXAGONAL, ELAS	EA	2
2	3	PAHZZ	6730-00-223-7305	80-49	31535	ASSEMBLY, HOUSING	EA	1
2	4	PAFZZ	5305-00-043-6478	MS35221-17	96906	SCREW, MACHINE, BND	EA	1
2	5	PAHZZ	5930-00-455-1700	80-38	31535	SWITCH, THERMAL	EA	1
2	6	PAHZZ	5310-00-934-9739	MS35649-242	96906	NUT, HEXAGONAL, STEEL	EA	4
2	8	PAHZZ	5310-00-081-8087	MS20365-632A	96906	NUT, HEXAGONAL, ELAS	EA	2
2	9	XDHZZ		80-47	31535	BRACKET, MOUNTING		1
2	10	PAHZZ	5305-00-844-9888	MS24621-15	96906	SCREW, MET, SH., BND, HD	EA	2
2	11	XDHZZ		80-50	31535	COVER,SWITC	EA	1
2	12	PAHZZ	6105-00-351-3112	80-45	31535	ASSEMBLY, MOTOR, AND	EA	1
2	13	PAHZZ	5305-00-411-0682	MS51957-124	96906	SCREW, MACH, BND, H	EA	2
2	14	PAFZZ	5930-00-412-9261	2DM8	91929	SWITCH, INTERLOCK	EA	1
2	15	PAHZZ	5305-00-221-6116	MS51957-125	96906	SCREW, MACH, BND H	EA	4
2	16	PAFZZ	5340-00-415-6370	80-34	15329	BUMPER, RUBBER	EA	1
2	17	XDFZZ		80-32	31535	CORD, POWER	EA	1
2	18	PAFZZ	5305-00-984-6223	MS35221-36	96906	SCREW, MACHINE, BND	EA	6
2	19	PAFZZ	5305-00-984-4983	MS35206-226	96906	SCREW, MACHINE BND	EA	6
2	21	PAFZZ	5930-00-413-4409	80-31	31535	SWITCH, ON-OFF, DPDP	EA	1
2	23	XDHZZ		80-36	31535	STRAP, MOUNTIN	EA	1
2	24	XDHZZ		80-37	31535	WASHER, ADJUSTIN	EA	32
2	25	XDHZZ		6B	78537	BEAD, INSULATING	EA	4
2	28	PAHZZ	5305-00-984-4988	MS35206-228	96906	SCREW, MACHINE, FILH	EA	2

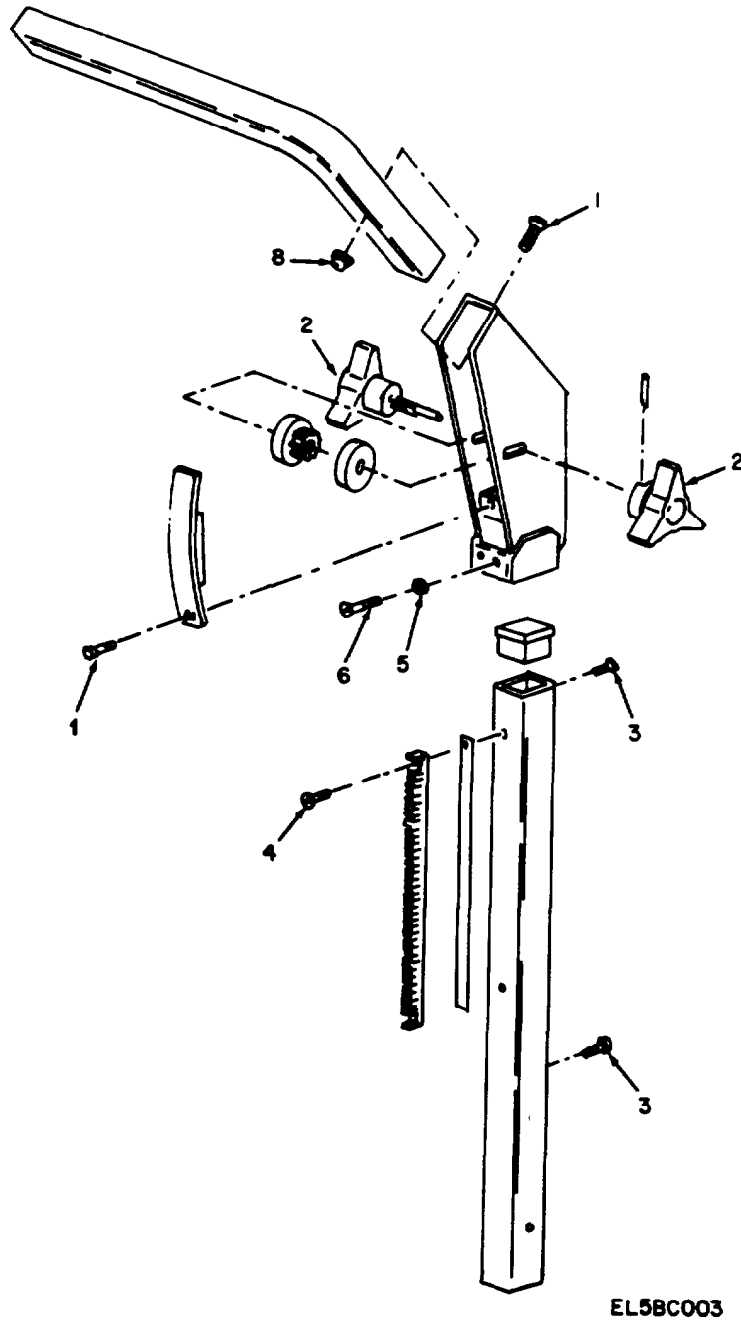
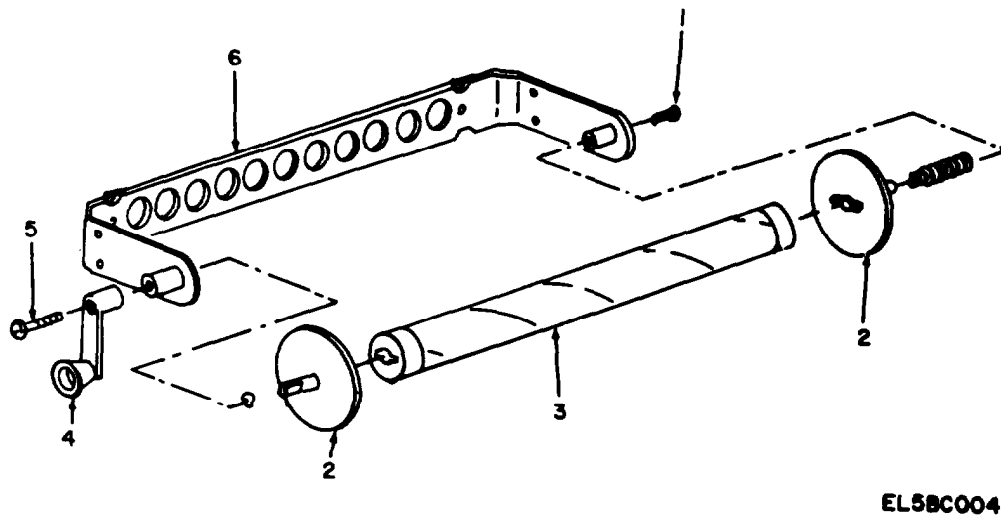


Figure 3. Projector, Overhead, Still Picture Ph-637D/PFP, Arm and Post Assembly.

## SECTION II

TM11-6730-235-24P

(1)		(2)	(3)	(4)	(5)	(6)	(7)	(8)
ILLUSTRATION		SMR CODE	NATIONAL STOCK NUMBER	PART NUMBER	FSCM	DESCRIPTION  <i>USABLE ON CODE</i>	U/M	QTY INC IN UNIT
(a) FIG. NO.	(b) ITEM NO.							
3	1	PAHZZ	5305-00-984-6191	MS35206-243	96906	SCREW, MACHINE, BND	EA	3
3	2	PAOZZ	5355-00-237-4037	80-13BLACK	31535	KNOB, FOCUS	EA	2
3	3	PAHZZ	5305-00-720-7763	MS35265-40	96906	SCREW, MACHINE, FILH	EA	2
3	4	PAHZZ	5305-00-889-2997	MS35206-215	96906	SCREW, MACHINE, B	EA	2
3	5	XDHZZ		MS35649-832A	96906	NUT, HEXAGONAL, STEEL	EA	2
3	6	PAHZZ	5305-00-582-6151	MS181212-30	96906	SCREW, MACHINE, NY	EA	2
3	8	XDHZZ		MS20365B832A	96906	NUT, HEXAGONAL, ELAS	EA	2
						9		



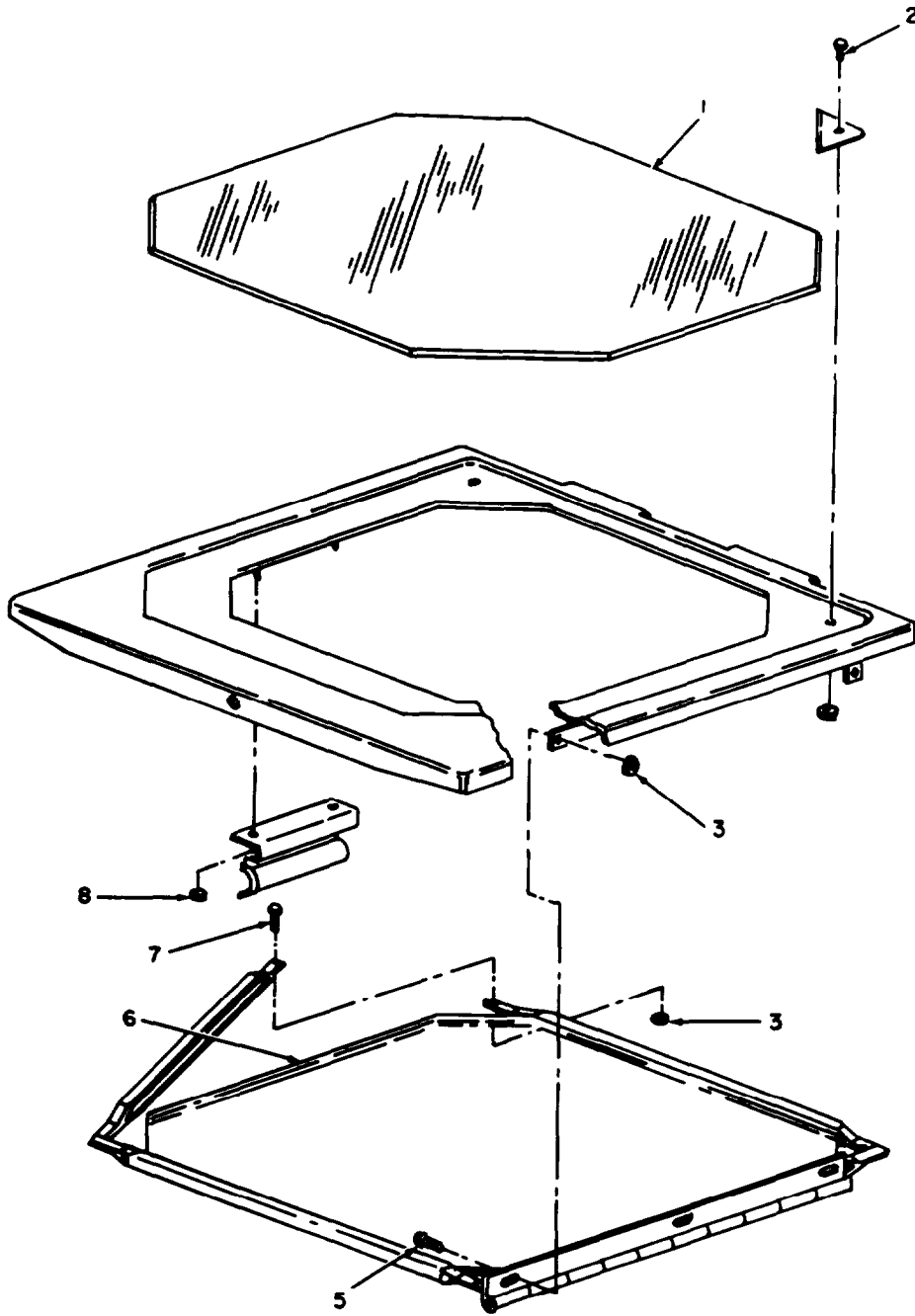
EL5BC004

Figure 4. Projector, Overhead, Still Picture PH-637D/PFP, Roll Attachment.

## SECTION II

TM11-6730-235-24P

(1)		(2)	(3)	(4)	(5)	(6)	(7)	(8)
ILLUSTRATION		SMR CODE	NATIONAL STOCK NUMBER	PART NUMBER	FSCM	DESCRIPTION  <i>USABLE ON CODE</i>	U/M	QTY INC IN UNIT
(a) FIG. NO.	(b) ITEM NO.							
4	1	XDHZZ		AN530	96906	SCREW, SLFTPG, FIL	EA	1
4	2	XDHZZ		615-82-4	31535	PLATE, END	EA	2
4	3	PAOZZ	6760-00-350-9467	615-82-1	31535	SPOOL, ATTATCHMEN	EA	1
4	4	XDHZZ		615-82-2	31535	HANDLE, CRANK	EA	1
4	5	XDHZZ		MS24621	96906	SCREW, SLFTPG, BND HD	EA	1
4	6	XDHZZ		615-82-7	31535	BRACKET, ATTCHMEN	EA	1
						11		



EL58C005

Figure 5. Projector, Overhead, Still Picture PH-637D/PFP, Top Plate Assembly.



## SECTION II

TM11-6730-235-24P

(1)		(2)	(3)	(4)	(5)	(6)	(7)	(8)
ILLUSTRATION		SMR CODE	NATIONAL STOCK NUMBER	PART NUMBER	FSCM	DESCRIPTION  <i>USABLE ON CODE</i>	U/M	QTY INC IN UNIT
(a) FIG. NO.	(b) ITEM NO.							
5	1	PAOZZ	6730-00-223-7302	80-29	31535	GLASS, STAGE	EA	1
5	2	PAHZZ	5305-00-984-4988	MS35206-228	96906	SCREW, MACHINE, BND	EA	2
5	3	PAHZZ	5310-00-984-9739	MS35649-242	96906	NUT, HEXAGONAL, STEEL	EA	3
5	5	PAHZZ	5305-00-889-2997	MS35206-215	96906	SCREW, MACHINE, BND	EA	2
5	6	PAFZZ	6760-00-402-2293	80-28	31535	LENS, FRESNEL	EA	1
5	8	XDFZZ		MS35649-832A	96906	NUT, HEXAGONAL, STEEL	EA	2

## SECTION IV

## NATIONAL STOCK NUMBER AND PART NUMBER INDEX

TM 11-6730-235-24P

NOTE: LATEST NATIONAL STOCK NUMBER AND PART NUMBER ASSIGNMENTS ARE INCLUDED AT END OF INDEX

STOCK NUMBER	FIGURE NO.	ITEM NO.	STOCK NUMBER	FIGURE NO.	ITEM NO.
5305-00-443-6478	2	4	5305-00-411-0682	2	13
			5930-00-412-9261	2	14
			5950-00-413-4409	2	21
			5340-00-415-6370	2	16
5310-00-081-8087	2	8	6130-00-427-7821	1	8
6730-00-165-7299	1	2	5310-00-515-9267	1	4
5305-00-221-6116	2	15	5305-00-582-6151	3	6
6730-00-223-7302	5	1	5305-00-720-7763	3	3
6730-00-223-7305	2	3	5305-00-044-9888	2	10
5320-00-242-1578	1	3	5310-00-934-9739	2	6
6730-00-350-4177	1	12			
6760-00-350-9467	4	3	5310-00-934-9739	5	3
6105-00-351-3112	2	12			
6760-00-402-2293	5	6	5305-00-984-4984	1	14

PART NUMBER	FSCM	FIG. NO.	ITEM NO.	PART NUMBER	FSCM	FIG. NO.	ITEM NO.
AN530	96906	4	1	MS35649-242	96906	5	3
MS18212-30	96906	3	6				
MS20365-632A	96906	2	8	MS35649-832A	96906	3	5
MS20365B832A	96906	2	2	MS35649-832A	96906	5	8
MS20365B832A	96906	3	8	M51957-124	96906	2	13
MS20470A6-8	96906	1	3	MS51957-125	96906	2	15
MS24621	96906	4	5	MORB8-15	31535	1	10
MS24621-15	96906	2	10	12ODY5	06247	2	1
MS24679-22	96906	1	5	2DW8	91929	2	14
				68	78537	2	25
				615-82	31535	1	8
MS35221-17	96906	2	4	615-82-1	31535	4	3
				615-82-2	31535	4	4
				615-82-4	33535	4	2
				615-02-7	31535	4	6
				00-0	31535	1	9
				80-13BLACK	31535	3	2
				80-28	31535	5	6
				80-29	31535	5	1
				00-30	31535	1	11
MS35221-36	96906	2	18	80-31	31535	2	21
				80-32	31535	2	17
				80-34	15329	2	16
				80-36	31535	2	23
				80-37	31535	2	24
				80-45	31535	2	12
				80-47	31535	2	9
				80-49	31535	2	3
MS535265-40	96906	3	3	80-50	31535	2	17
MS35425-37	96906	1	4	80-8	31535	1	12
MS35649-242	96906	2	6	80-9	31535	1	2

LATEST NATIONAL STOCK NUMBER ASSIGNMENTS

STOCK NUMBER	FIG. NO.	ITEM NO.
5355-00-237-4053	3	2
6240-00-419-4301	2	1
5930-00-455-1700	2	5
5305-00-889-2997	3	4
5305-00-889-2997	5	5
5305-00-984-4902	1	15
5305-00-984-4983	2	19
5305-00-984-4988	1	13
5305-00-984-4988	2	28
5305-00-984-4900	5	2
5305-00-904-6189	1	7
5305-00-984-629L	1	1
5305-00-984-6391	3	1
5305-00-984-6223	2	18
5330-00-995-2723	1	5

LATEST PART NUMBER ASSIGNMENTS

PART NUMBER	FSCM	FIG. NO.	ITEM NO.
MS35206-215	96906	3	4
MS35206-215	96906	5	5
MS535206-225	96906	1	15
MS35206-226	96906	2	19
MS35206-227	96906	1	14
MS35206-228	96906	1	13
MS35206-228	96906	2	28
MS35206-228	96906	5	2
MS35206-241	96906	1	7
MS35206-243	96906	1	1
MS35206-243	96906	3	1
80-30	31535	2	5

RECOMMENDED CHANGES TO EQUIPMENT TECHNICAL MANUALS



**SOMETHING WRONG** WITH THIS MANUAL?

THEN... JOT DOWN THE DOPE ABOUT IT ON THIS FORM, TEAR IT OUT, FOLD IT AND DROP IT IN THE MAIL!

FROM: (YOUR UNIT'S COMPLETE ADDRESS)

Commander  
Stateside Army Depot  
ATTN: AMSTA-US  
Stateside, N.J. 07703

DATE 10 July 1975

PUBLICATION NUMBER

TM 11-5840-340-20P

DATE

23 Jan 78

TITLE

Radar Set AN/PRC-76

BE EXACT... PIN-POINT WHERE IT IS

IN THIS SPACE TELL WHAT IS WRONG AND WHAT SHOULD BE DONE ABOUT IT:

PAGE NO.	PARA-GRAPH	FIGURE NO.	TABLE NO.
33			
44		19	
45			

For item 2, change the NSN to read: 5835-00-134-9186.  
Reason: Accuracy.

Identify the cover on the junction box (item no. 5).  
Reason: It is a separate item and is not called out on figure 19.

Add the cover of the junction box as an item in the listing for figure 19.  
Reason: Same as above.

TEAR ALONG DOTTED LINE

TYPED NAME, GRADE OR TITLE, AND TELEPHONE NUMBER

SSG I. M. DeSpirito 999-1776

SIGN HERE:

*SSG I. M. DeSpirito*

DA FORM 2028-2  
1 AUG 74

P.S.--IF YOUR OUTFIT WANTS TO KNOW ABOUT YOUR MANUAL "FIND," MAKE A CARBON COPY OF THIS AND GIVE IT TO YOUR HEADQUARTERS.





# SOMETHING WRONG WITH THIS MANUAL?

THEN... JOT DOWN THE  
DOPE ABOUT IT ON THIS  
FORM, TEAR IT OUT, FOLD  
IT AND DROP IT IN THE  
MAIL!

FROM: (YOUR UNIT'S COMPLETE ADDRESS)

DATE

PUBLICATION NUMBER

TM 11-6730-235-24P

DATE

8 NOV 78

TITLE

Projector, Overhead Still  
Picture PH-637D/PFP

BE EXACT... PIN-POINT WHERE IT IS

IN THIS SPACE TELL WHAT IS WRONG  
AND WHAT SHOULD BE DONE ABOUT IT:

PAGE  
NO.

PARA-  
GRAPH

FIGURE  
NO.

TABLE  
NO.

TEAR ALONG DOTTED LINE

TYPED NAME, GRADE OR TITLE, AND TELEPHONE NUMBER

SIGN HERE:

FILL IN YOUR  
UNIT'S ADDRESS

FOLD BACK

DEPARTMENT OF THE ARMY

OFFICIAL BUSINESS  
PENALTY FOR PRIVATE USE, \$300

Commander  
US Army Communications and  
Electronics Materiel Readiness Command  
ATTN: DRSEL-ME-MQ  
Fort Monmouth, New Jersey 07703

FOLD BACK

TEAR ALONG DOTTED LINE

RECOMMENDED CHANGES TO EQUIPMENT TECHNICAL MANUALS



THEN... JOT DOWN THE DOPE ABOUT IT ON THIS FORM, TEAR IT OUT, FOLD IT AND DROP IT IN THE MAIL!

# SOMETHING WRONG WITH THIS MANUAL?

FROM: (YOUR UNIT'S COMPLETE ADDRESS)

DATE

PUBLICATION NUMBER

TM 11-6730-235-24P

DATE

8 NOV 78

TITLE

Projector, Overhead Still  
Picture PH-637D/PFP

BE EXACT... PIN-POINT WHERE IT IS

IN THIS SPACE TELL WHAT IS WRONG AND WHAT SHOULD BE DONE ABOUT IT:

PAGE NO.	PARA-GRAPH	FIGURE NO.	TABLE NO.

TYPED NAME, GRADE OR TITLE, AND TELEPHONE NUMBER

SIGN HERE:

TEAR ALONG DOTTED LINE

DA FORM 2028-2  
1 AUG 74

P.S.--IF YOUR OUTFIT WANTS TO KNOW ABOUT YOUR MANUAL "FIND," MAKE A CARBON COPY OF THIS AND GIVE IT TO YOUR HEADQUARTERS.

FILL IN YOUR  
UNIT'S ADDRESS

FOLD BACK

DEPARTMENT OF THE ARMY

OFFICIAL BUSINESS

PENALTY FOR PRIVATE USE, \$300

Commander  
US Army Communications and  
Electronics Materiel Readiness Command  
ATTN: DRSEL-<sup>ME</sup>-MQ  
Fort Monmouth, New Jersey 07703

FOLD BACK

TEAR ALONG DOTTED LINE



RECOMMENDED CHANGES TO EQUIPMENT TECHNICAL MANUALS



THEN... JOT DOWN THE DOPE ABOUT IT ON THIS FORM, TEAR IT OUT, FOLD IT AND DROP IT IN THE MAIL!

# SOMETHING WRONG WITH THIS MANUAL?

FROM: (YOUR UNIT'S COMPLETE ADDRESS)

DATE

PUBLICATION NUMBER

TM 11-6730-235-24F

DATE

8 NOV 78

TITLE

Projector, Overhead Still  
Picture PH-637D/PPP

BE EXACT... PIN-POINT WHERE IT IS

IN THIS SPACE TELL WHAT IS WRONG AND WHAT SHOULD BE DONE ABOUT IT:

PAGE NO.	PARA-GRAPH	FIGURE NO.	TABLE NO.
----------	------------	------------	-----------

TEAR ALONG DOTTED LINE

TYPED NAME, GRADE OR TITLE, AND TELEPHONE NUMBER

SIGN HERE:

FILL IN YOUR  
UNIT'S ADDRESS

FOLD BACK

DEPARTMENT OF THE ARMY

OFFICIAL BUSINESS

PENALTY FOR PRIVATE USE, \$300

Commander  
US Army Communications and  
Electronics Materiel Readiness Command  
ATTN: DRSEL-ME-MQ  
Fort Monmouth, New Jersey 07703

FOLD BACK

TEAR ALONG DOTTED LINE

By Order of the Secretary of the Army:

**BERNARD W. ROGERS**  
*General, United States Army*  
*Chief Staff*

Official:

**J. C. PENNINGTON**  
*Brigadier General, United States Army*  
*The Adjutant General*

**DISTRIBUTION:**

*Active Army:*

HISA (Ft Monmouth) (26)	
USAINSCOM (2)	Ft Carson (5)
COE (1)	Ft Gillem (10)
TSG (1)	Ft Gordon (10)
USAARENBD (1)	Ft Huachuca (10)
DARCOM (1)	Ft Richardson (CERCOM Ofc) (2)
TRADOC (2)	Army Dep (1) except
OS MAJ COMD (4)	LBAD (14)
TECOM (2)	SAAD (30)
USACC (4)	SHAD (3)
MDW (1)	TOAD (14)
Armies (2)	USA Dep (1)
Corps (2)	Sig Sec USA Dep (1)
Svc Colleges (5)	Units org under fol TOE:
USASIGS (5)	(1 cy each unit, UNIONIC)
USAADS (2)	29-207 (2)
USAFAS (2)	29-610 (2)
USAARMS (2)	11-96
USAIS (2)	11-117
USAES (2)	11-127
USAICS (3)	11-500 (AA-AC)
MAAG (1)	19-256
USARMIS (1)	19-316
USAERDAA (1)	29-134
USAERDAW (1)	29-136

NG: State AG (3); Units - Same as Active Army except allowance is 1 copy per unit.

USAR: None.

For explanation of abbreviations used, See AR 310-50.

DEPARTMENT OF THE ARMY  
US ARMY AG PUBLICATIONS CENTER  
1655 WOOSON ROAD  
ST LOUIS MISSOURI 63114

OFFICIAL BUSINESS  
PENALTY FOR PRIVATE USE 5300